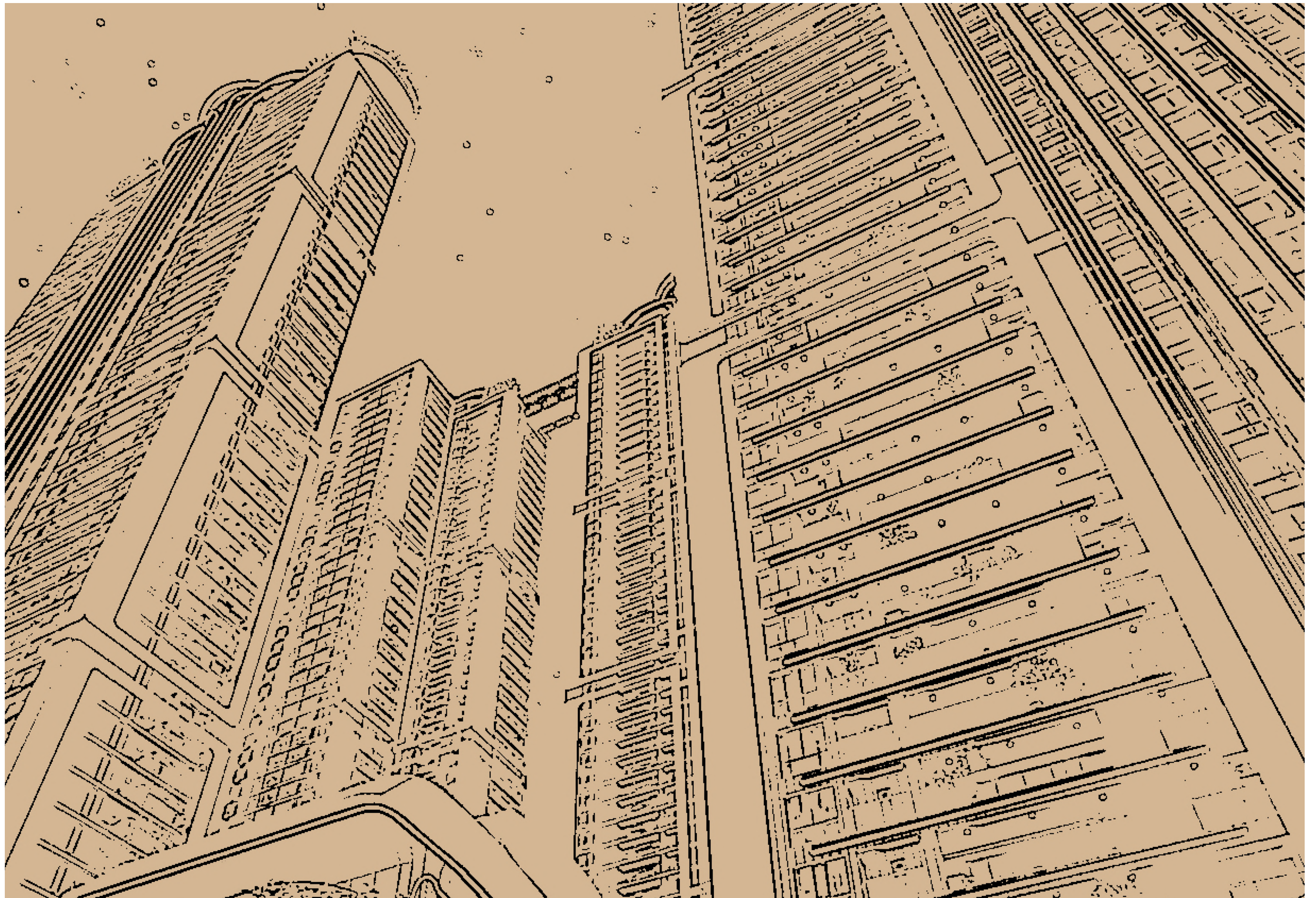


# ONE OF A KIND @NEOPOLIS

———— HYDERABAD ————







# ELEMENTS OF NATURE

## Panchtatva

The 5 elements of nature - Earth, Water, Fire, Air, and Sky - are the timeless building blocks of life, weaving a delicate balance that sustains our world.

### AIR



- Large Windows
- Adequate Cross Ventilation

### EARTH



- Plants & Greenery
- Varied Landscapes Open Spaces

### WATER



- 3 Swimming Pools
- Lake-View
- Other Waterbodies

### FIRE



- Adequate Sunlight

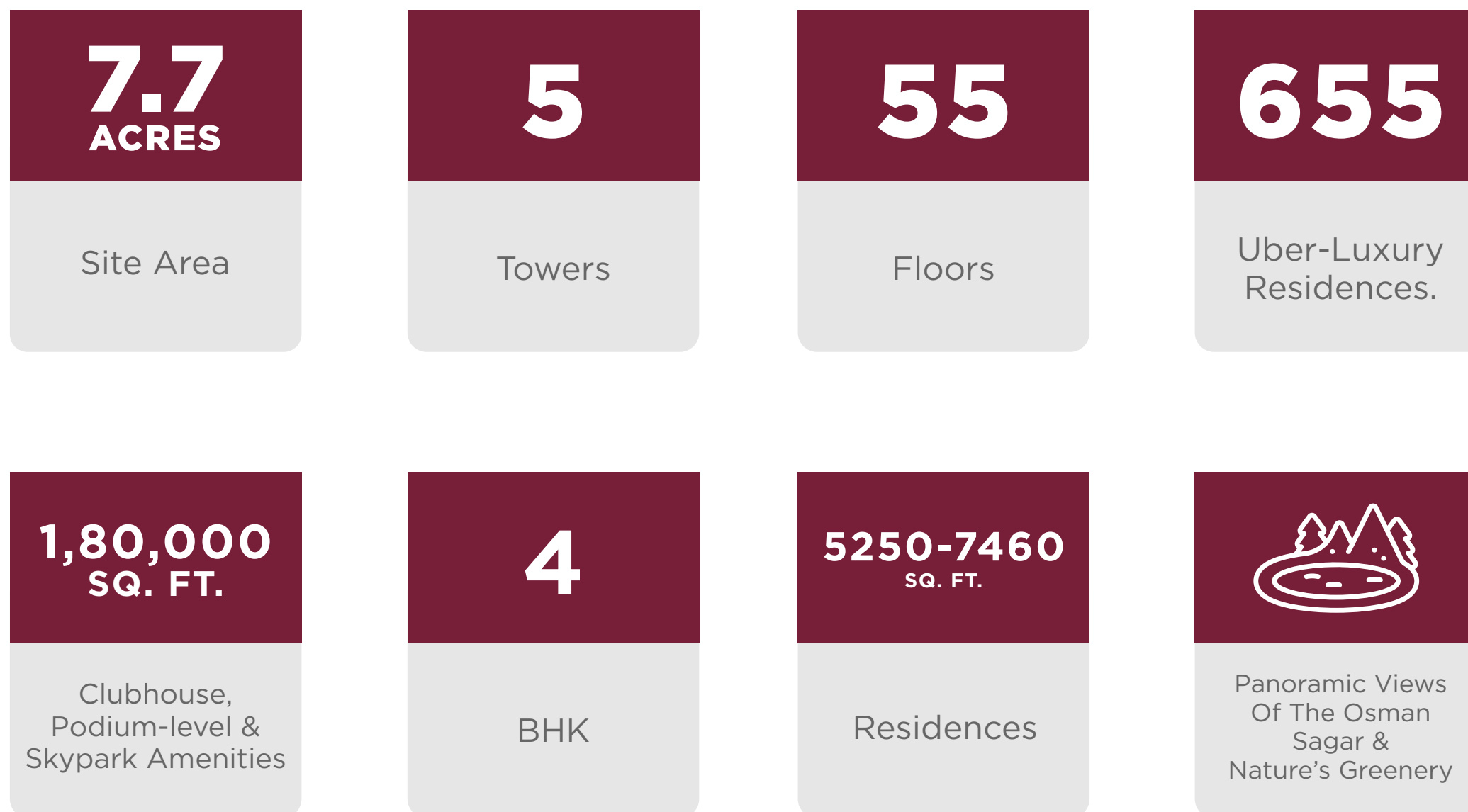
### SKY



- Sky Park
- Sky Decks
- Vantage Points



# THE BEACON OF EXCLUSIVITY





# UNIQUE PROPOSITIONS, FOR HIGH-QUALITY LIVING



Osman Sagar  
Lake Views



Spacious  
Living



Podium Level  
Amenities



6 Level  
Clubhouse



Private  
Lobbies



Larger-than-  
life Master Suites



Privacy



Lifts With  
Glass Facade



Dual Entry/Exit  
Gates



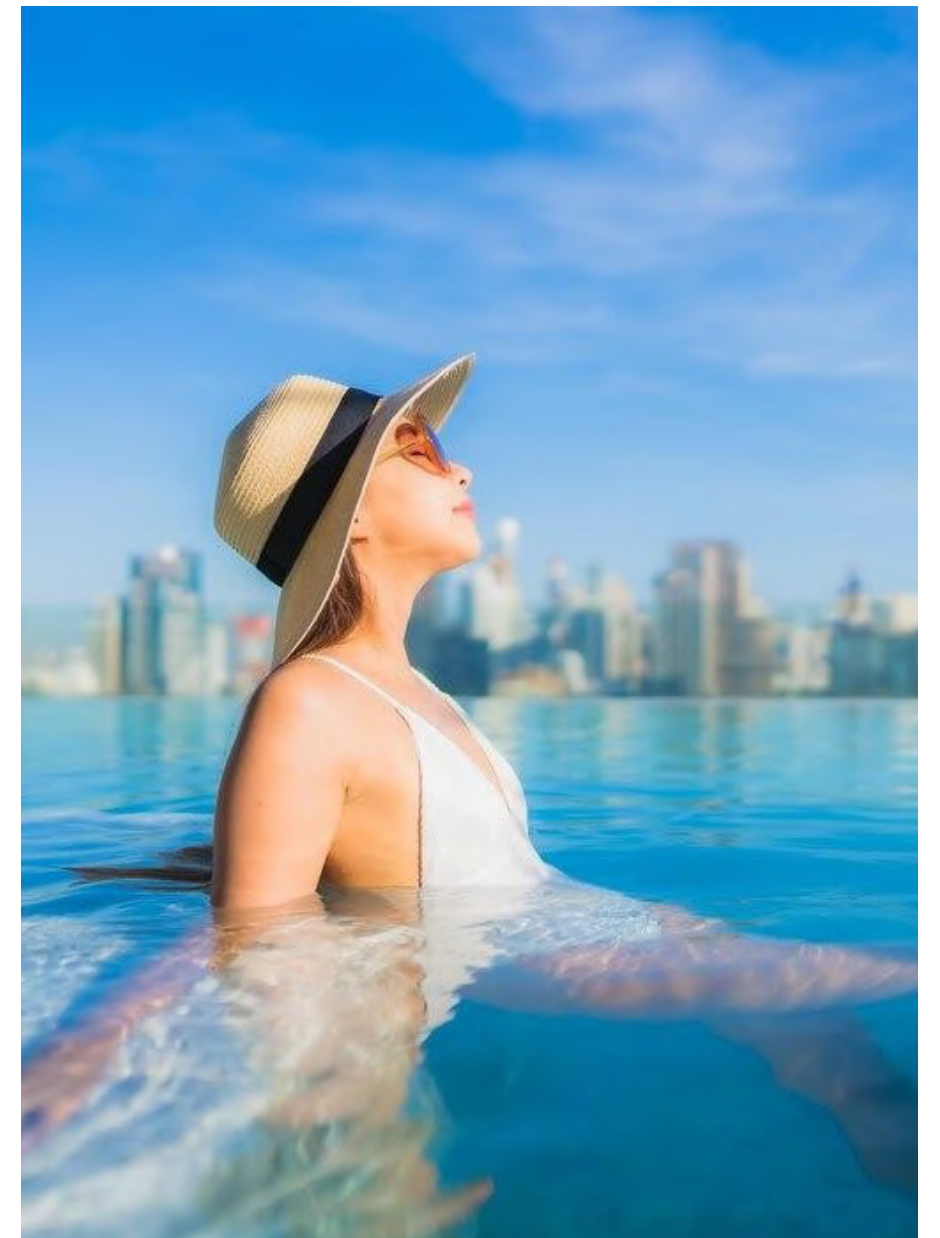
Sky  
Park



# 3 SWIMMING POOLS

The residents get to choose from 3 different swimming pools one at the stilt level, another at the Sky Deck and one more temperature-controlled indoor swimming pool.

Infinite indulgences begin at home





# AMENITIES



# BADMINTON COURTS





# SQUASH COURTS





# PICKLEBALL / PADDLEBALL





# FOOTBALL SIMULATION ARENA





# BOWLING ALLEY





# GOLF SIMULATOR





# CRICKET SIMULATOR





# AQUA GYM





# SKY PARTY LAWN





# SKY CINEMA



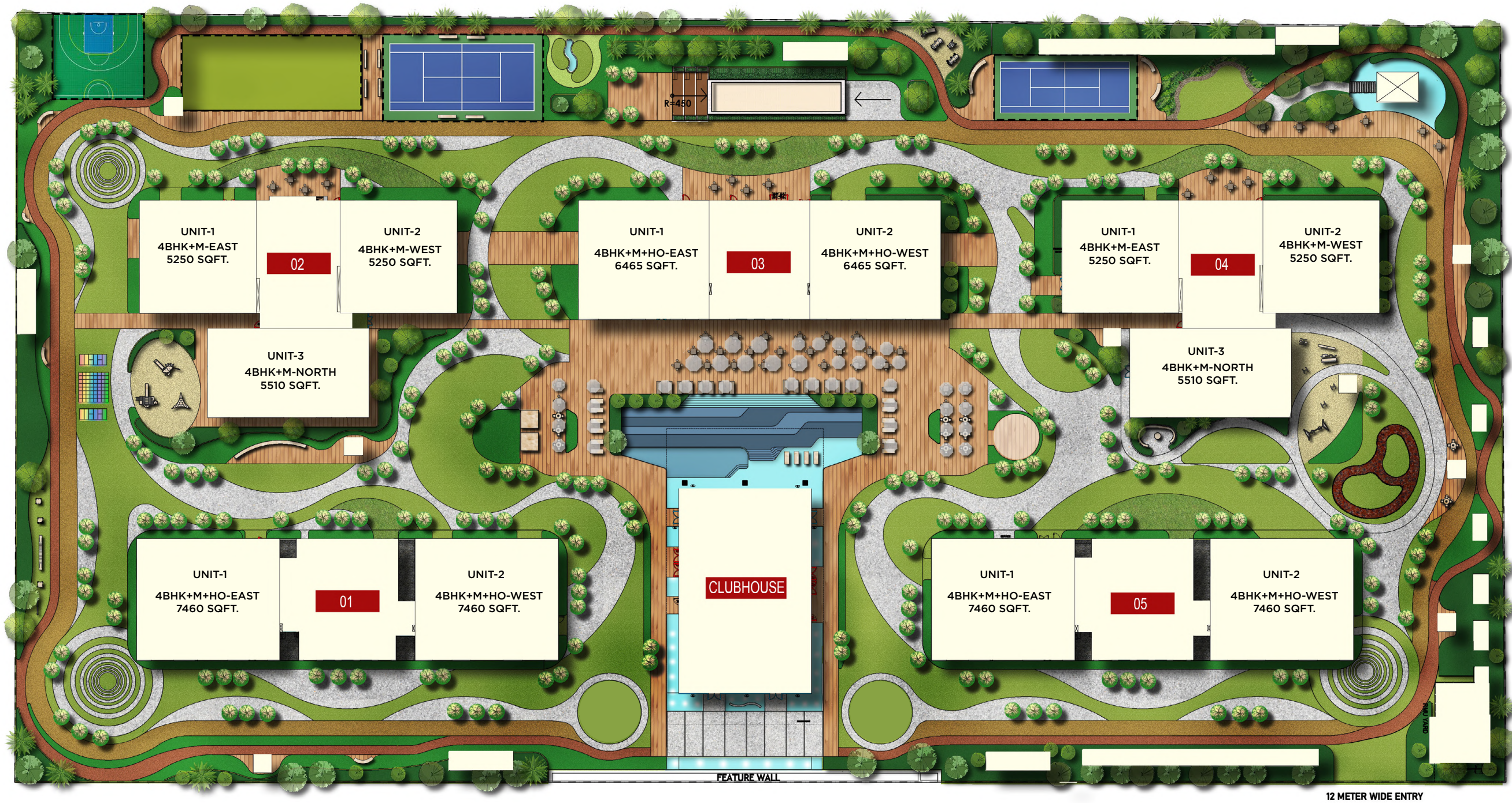


# SKY YOGA DECK





# MASTER PLAN





# TOWERS 1 & 5



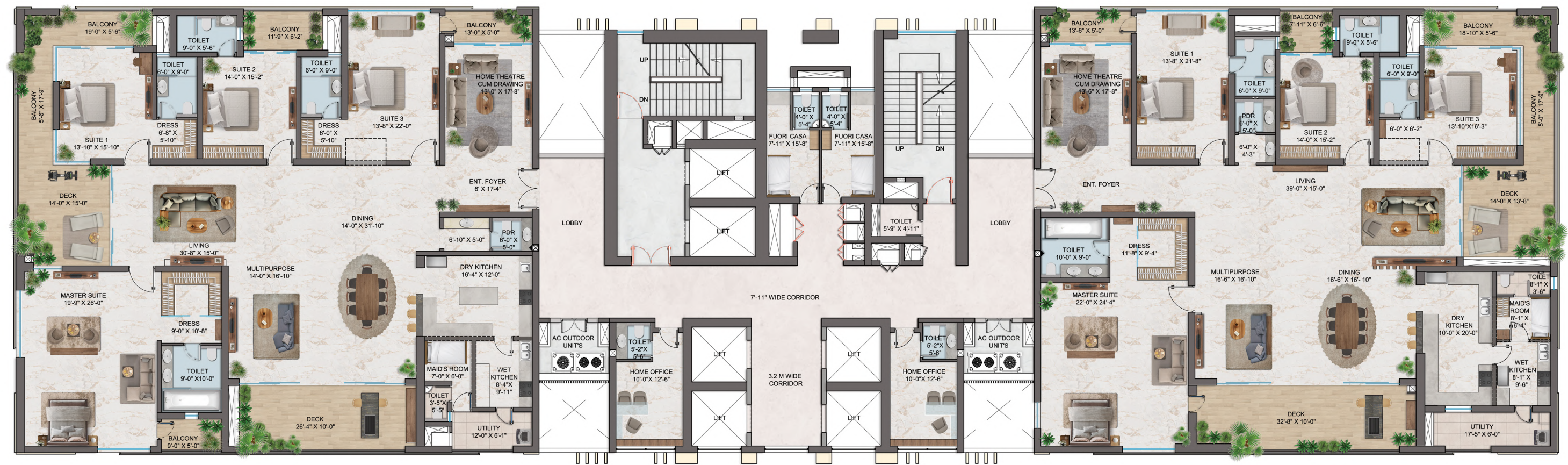
# TOWERS 1 & 5

## EAST FACING UNIT-1

7460 SQFT | 4BHK+M+HO

## WEST FACING UNIT-2

7460 SQFT | 4BHK+M+HO



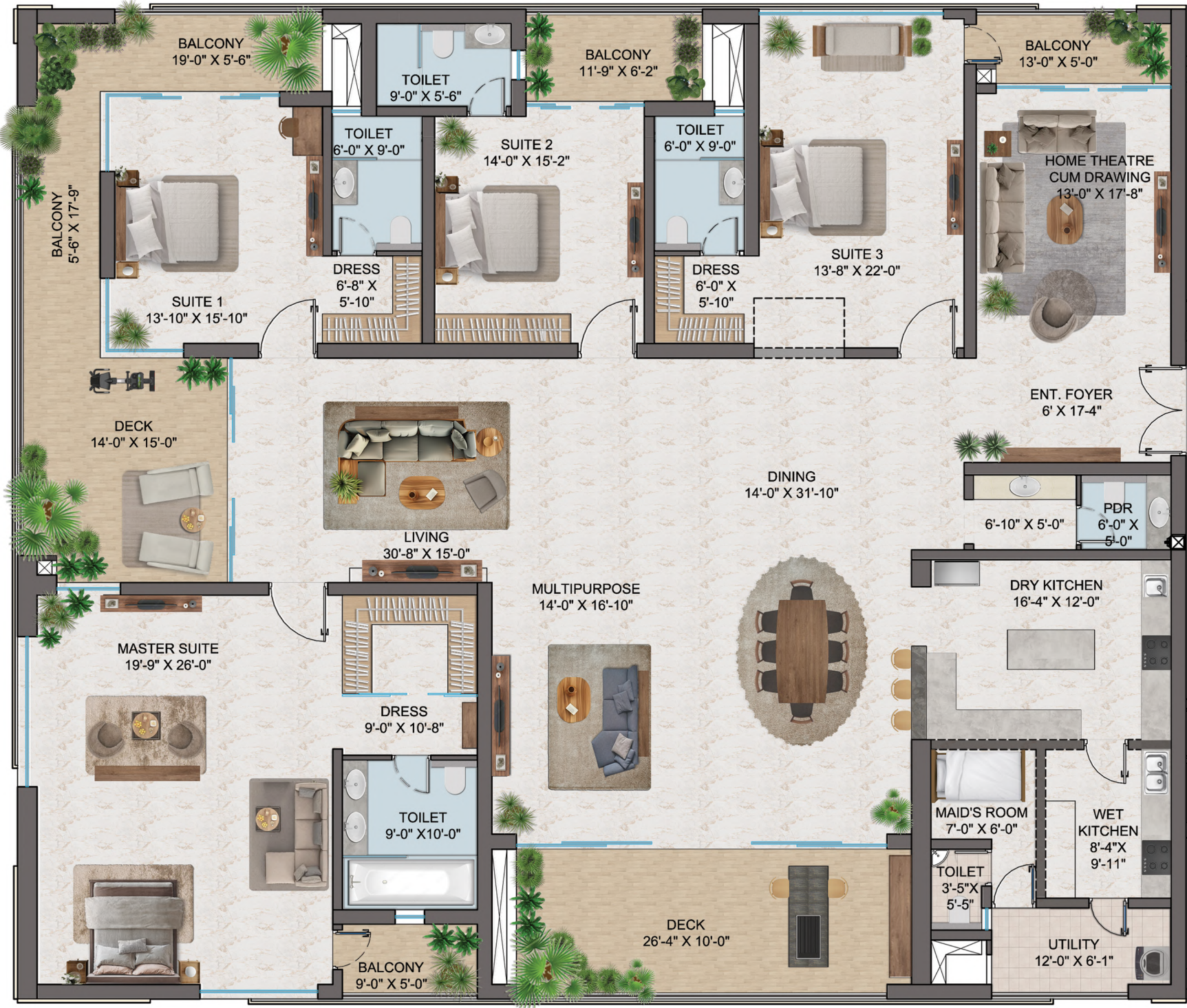


# TOWERS 1 & 5

UNIT NO-1

EAST FACING

7460 SQFT | 4BHK+M+HO





# TOWERS 1 & 5

UNIT NO-2

WEST FACING

7460 SQFT | 4BHK+M+HO





# TOWERS 2 & 4



# TOWERS 2 & 4

EAST FACING UNIT-1  
5250 SQFT | 4BHK+M

WEST FACING UNIT-2  
5250 SQFT | 4BHK+M



NORTH FACING UNIT-3  
5510 SQFT | 4BHK+M



# TOWERS 2 & 4

UNIT NO-1

EAST FACING

5250 SQFT | 4BHK+M





# TOWERS 2 & 4

UNIT NO-2

WEST FACING

5250 SQFT | 4BHK+M



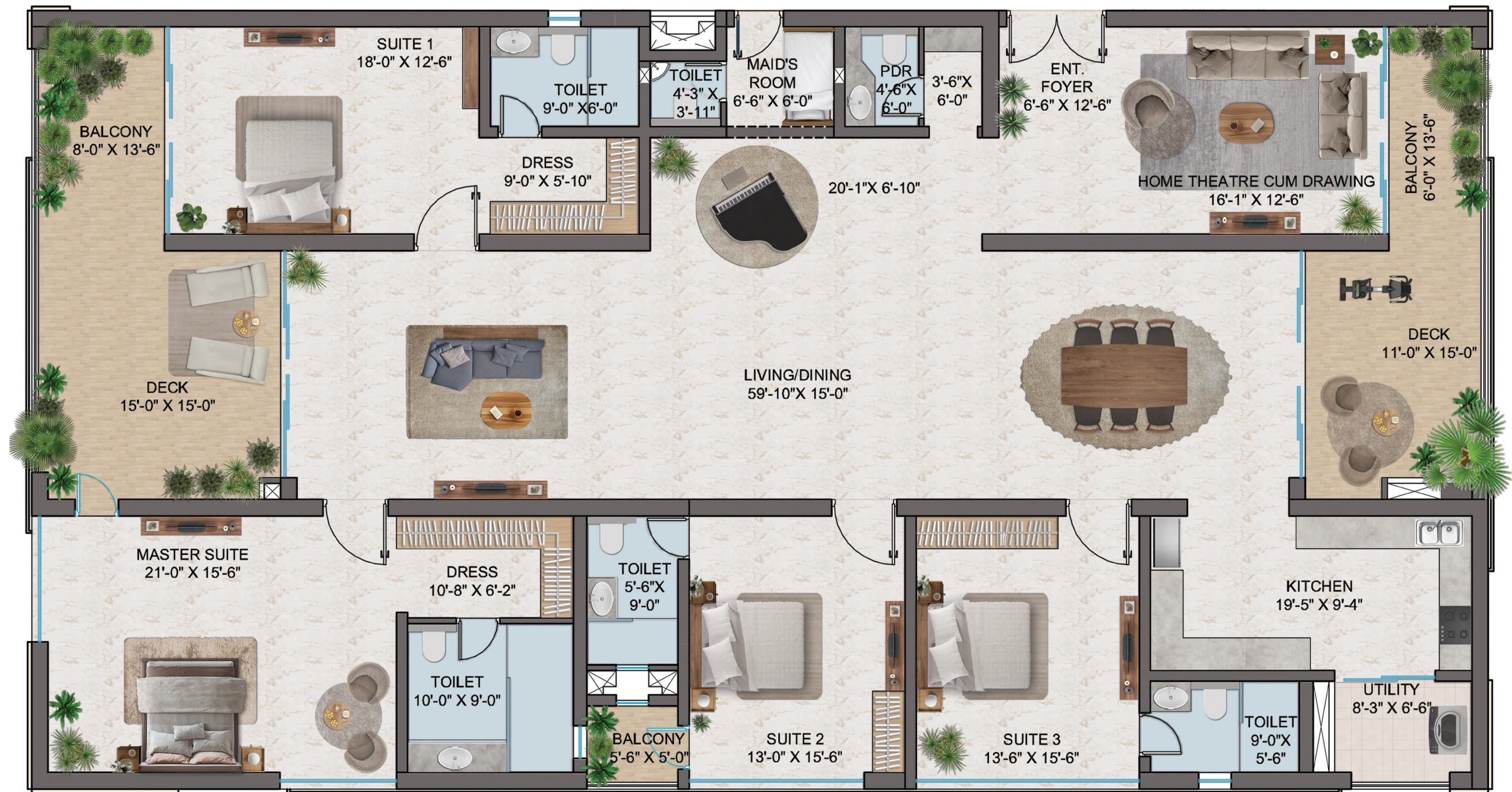


# TOWERS 2 & 4

UNIT NO-3

NORTH FACING

5510 SQFT | 4BHK+M





# TOWER 3



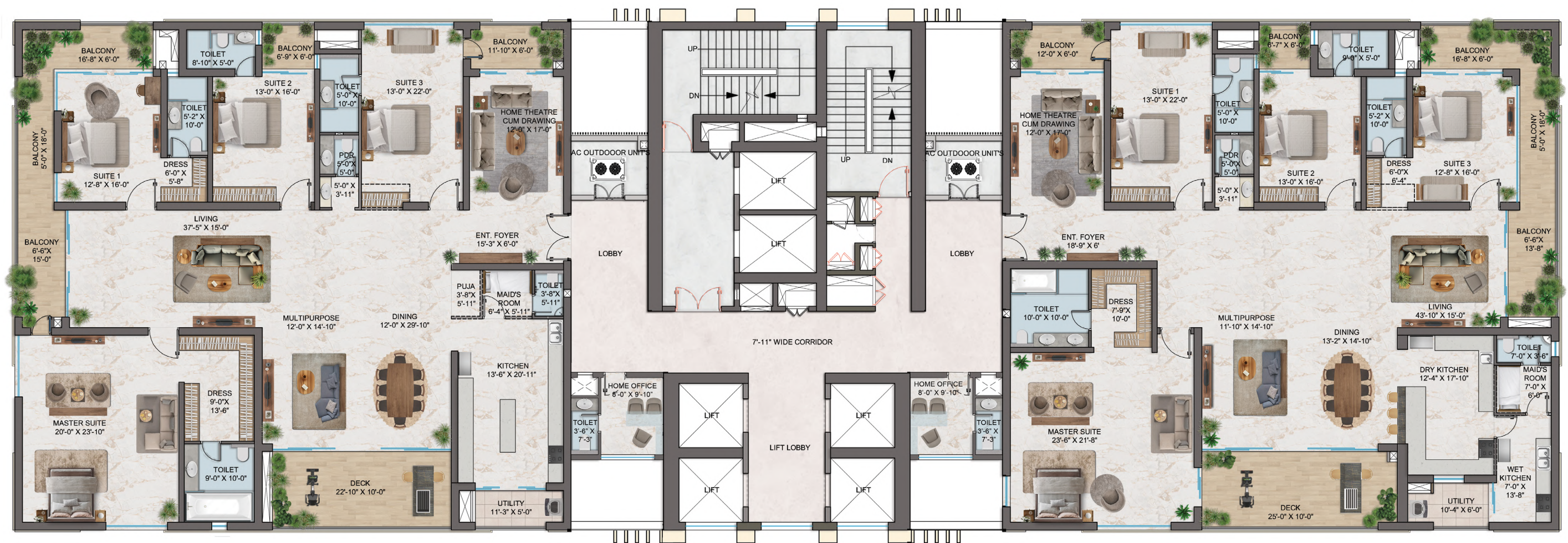
# TOWER 3

## EAST FACING UNIT-1

6465 SQFT | 4BHK+M+HO

## WEST FACING UNIT-2

6465 SQFT | 4BHK+M+HO





# TOWER 3

## UNIT NO-1

EAST FACING

6465 SQFT | 4BHK+M+HO





# TOWER 3

## UNIT NO-2

WEST FACING

6465 SQFT | 4BHK+M+HO





THANK YOU